



PCRBIO SYSTEMS
simplifying research

www.pcrbio.com

PCRBIO Ladder I

Product description

A combination of PCR products and restriction enzyme digested plasmids.

DNA amount of each band is provided based on loading 5 μ L per well.

PCRBIO ladder is ready to load, do not add 6x Sample Loading Buffer A to ladder.

Specifications

PCR products and double-stranded DNA digested with appropriate restriction enzymes, are phenol extracted and equilibrated to 10 mM Tris-HCl (pH 8.0) and 10 mM EDTA.

Concentration: 174 μ g/mL

Recommended Load: 5 μ L/well. The ladder can be used as it arrives for gels stained with SYBR-derived dyes, while it should be diluted 1:10, in 1x Sample Loading Buffer A, for gels stained with GelRed-derived dyes.

Contains orange G & xylene cyanol FF as tracking dyes

Quality control

PCR Biosystems operates under an ISO 13485 certified Quality Management System. Our products are extensively tested and undergo a comprehensive, multi-step quality control process according to ISO 13485 standards, to ensure optimum performance, consistency and traceability.

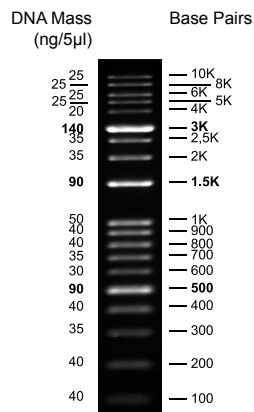
Pack Size	PCRBIO Ladder	6x Sample Loading Buffer A
100 lanes	1 x 500 μ L	1 x 400 μ L
500 lanes	5 x 500 μ L	1 x 2 mL

Shipping and storage

Store at 25 °C for 6 months

Store at 4 °C for 12 months

Store between -30 °C and -20 °C until the indicated expiry date.



1.5 % TAE agarose gel

■ PCRBIO Ladder I

Product Use: Unless we agree otherwise in writing, the Goods we supply are provided:

- For research purposes only and you should not use or rely on the Goods for diagnostic purposes. If you wish to use the Goods in a regulatory approved medical device, please contact us so that we may consider this and discuss it further with you.
- Subject to our standard terms and conditions found at <https://pcrbio.com/terms-conditions/>.